

# PUBLIC SAFETY AND SECURITY



# ABOUT ST ENGINEERING

## EMPOWERING SAFE, SECURE & RESILIENT CITIES

At ST Engineering, we apply our technology and innovation to solve real-world problems and improve lives. Our dedication to excellence and our strong track record have earned us a distinctive reputation for quality and trust as a global technology, defence and engineering group.

**50+**

Years of Experience

Our diverse portfolio of businesses spans the aerospace, smart city, digital solutions, defence and public security segments, and our global network of subsidiaries and associated companies spans Asia, Europe, the Middle East and the U.S.

**100+**

Countries

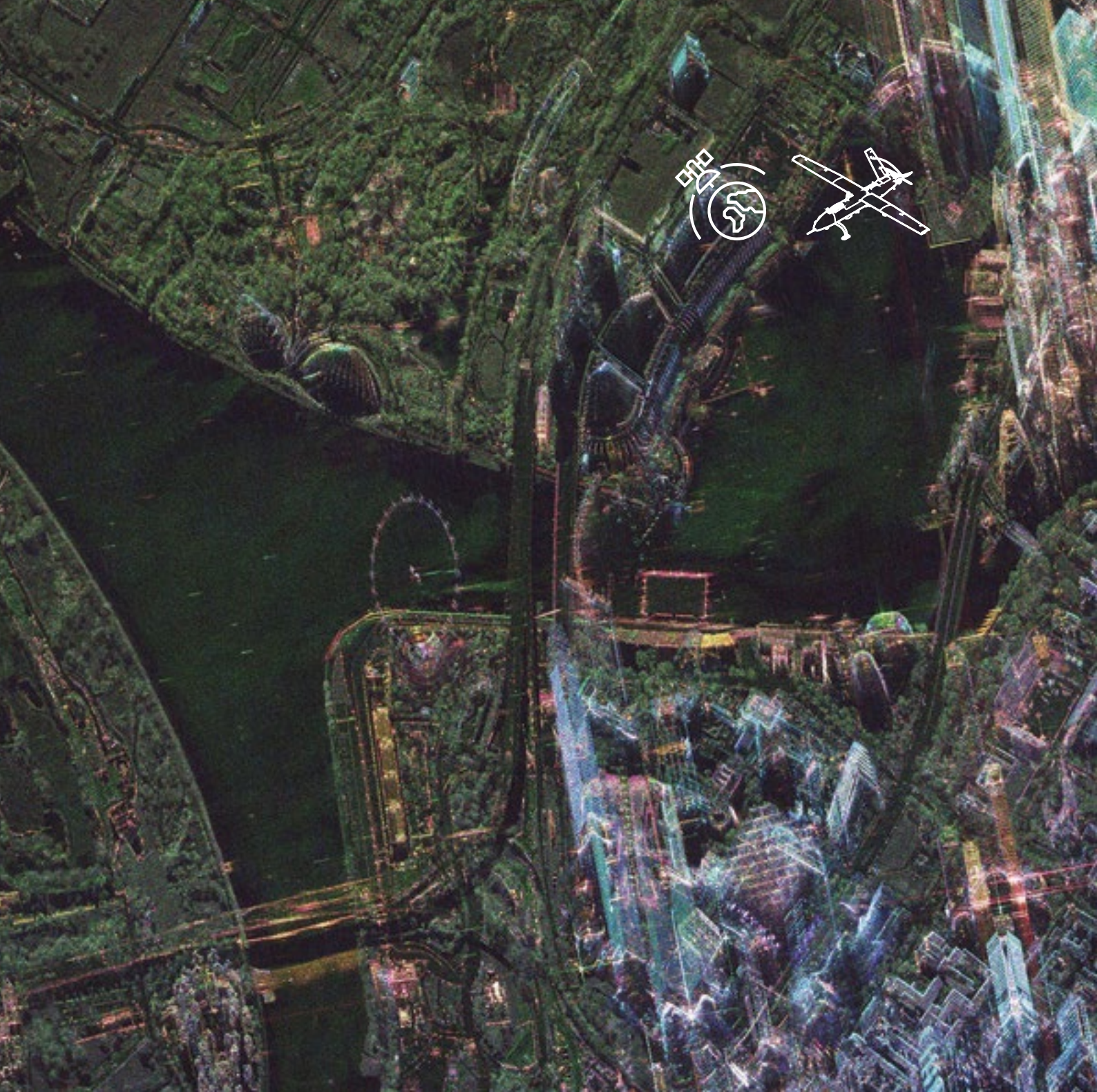
We succeed because of our ability to deliver what our partners and customers need. Across the Group, we have more than 27,000 employees with diverse background and skills, including over 19,000 engineering and technical talents dedicated to solving real-world problems for our customers.

We meet every challenge with an effective and competitive response so that our customers in more than 100 countries are better prepared, better protected, and better connected for a more sustainable future.



# CONTENTS









Marina Bay, Singapore  
© TeLEOS-2 ST Engineering Geo-Insights

# Aerial Advantage in Every Operation

**ENHANCING VISIBILITY, COVERAGE, AND COORDINATION FROM THE SKIES AND BEYOND**

Our air and space solutions deliver air mobility, data, and eyes in the sky to strengthen safety and response. AirFish enables low-altitude, fuel-efficient transport to hard-to-reach areas, ideal for emergency logistics. DroNet provides automated aerial surveillance for rapid incident detection and crowd monitoring, while VELOCE offers swift situational assessment in complex terrains. Backed by resilient satellite communications and geo-intelligence, we ensure seamless connectivity and informed decision-making for public safety, disaster coordination, and environmental monitoring - anywhere, anytime.



# AirFish

## REDEFINING COASTAL TRANSPORT AND LOGISTICS

The AirFish family of Wing-in-Ground (WIG) craft redefines maritime transport by enabling safe, sustainable and swift coastal travel and logistics.

Utilising aerodynamic forces and air pressure generated between itself and a water surface, AirFish WIG crafts bring about significant time savings and convenience for maritime transport, luxury travel and delivery of parapublic services.

- **Swift:** 3x the speed of marine craft
- **Sustainable:** Higher efficiency from flying close to the surface
- **Safe:** Unique wing design provides inherent stability in ground effect
- **Simple:** Requires minimal maintenance and simple infrastructure
- **Smooth:** Avoid rough seas without turbulence, low cabin noise ensures a smooth and comfortable ride



[Click here](#)



# Unmanned Air Systems

## SCALABLE DRONE-AGNOSTIC OPERATING PLATFORM

Our Unmanned Air Systems (UAS) is the first in Singapore to be approved for Beyond Visual Line of Sight (BVLOS) flights, our very own DroNet is a drone-agnostic operating platform capable of integrating autonomous and multi-function UAS networks and artificial intelligence to reduce operator workload.



## DroHub

### Centralised Command & Control Hub

DroHub is an integrated and scalable command & control hub designed to manage multiple UAVs simultaneously. With smart analytics capabilities, it allows users to track concurrent missions in real-time.

- One-stop turnkey drone solution
- Autonomous and multi-role
- Advanced data video analytics capabilities



**DrN-35 Series**



**DrN-15 Series**



# DroConnect

## Real-time Data Distribution & Video Analytics

DroConnect is a state-of-the-art web-based portal that offers real-time UAV status updates, live video streaming, and advanced data analytics powered by Artificial Intelligence.



[Click here](#)



# DroPort

## Remote Charging & Docking Station

The DroPort is a secured docking station (drone-in-a-box concept) for UAs that allows permanent on-site deployment of DroNet at remote places. The DroPort enables automatic launch and recovery of the DrN-15 series UAs.



[Click here](#)



# DrN-Series Drones

## Vertical Take-off & Landing Aircraft Platform (VTOL)

The DrN series UAs are autonomous VTOL aircraft designed for Beyond Visual Line of Sight (BVLOS) operations, meeting global safety standards. They are equipped with safety features for redundancy, automatic fail-safes, collision avoidance, and meet international regulatory standards. DrN series UAs support both day and night missions, and sensors can be configured for various applications.



[Click here](#)

**DrN-40**





# VELOCE

This fixed-wing Vertical Take-off and Landing Unmanned Aerial Vehicle (VTOL UAV) excels in space-constrained operations and maritime environments with its automated landing feature in high sea states.

It offers up to 14 hours of endurance, a 100 km operational range, with a cruise and max speed of 50 knots and 70 knots respectively.

Equipped with EO/IR sensors and a range finder, it delivers high-resolution intelligence for both maritime and land surveillance.

VELOCE 15 flies entirely on electrical power, whereas the VELOCE 60 uses a small conventional engine for forward flight.

- Launch and recover system not required
- High landing and takeoff relative wind envelope (25knots)
- Long datalink range (70km)

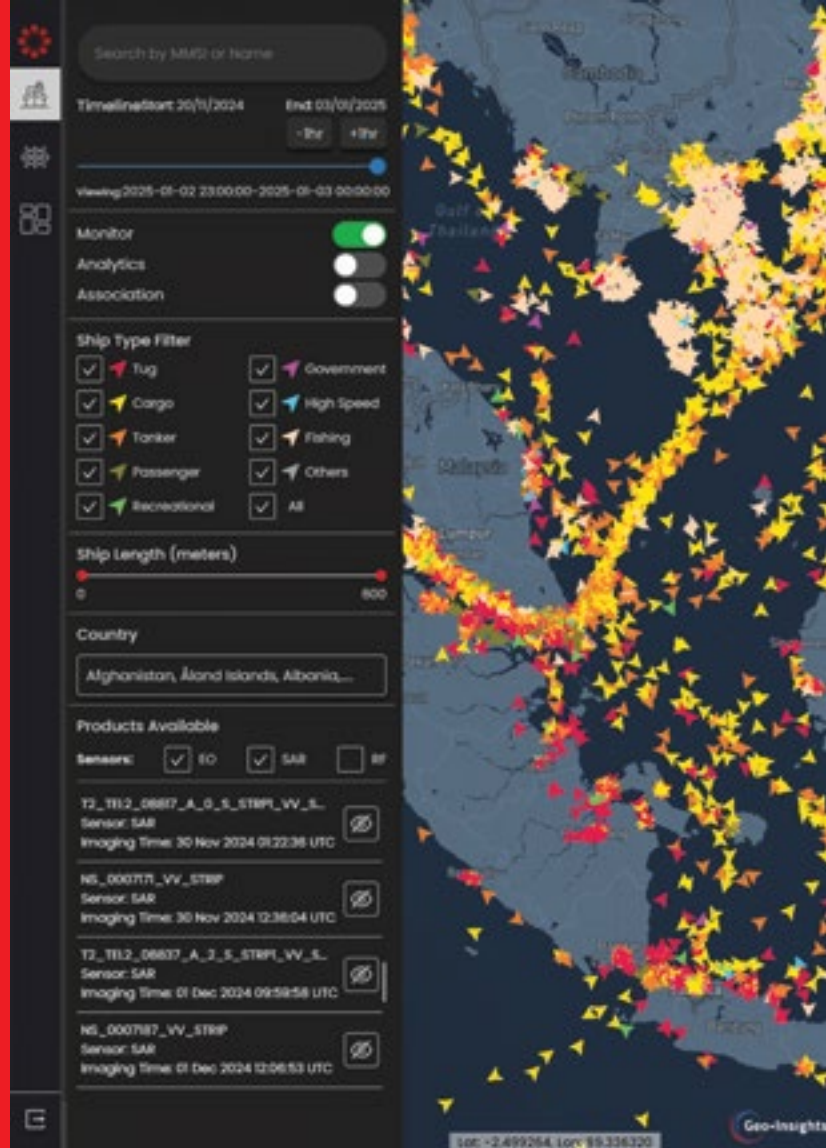


[Click here](#)

# Space

Our satellite solutions play a crucial role in transforming business, advancing economies, and enabling tomorrow's smart cities.

As a leading satellite solutions provider, we enable new possibilities for businesses through our extensive suite of products and services that span design, manufacturing, integration, launch management services and ground operations, as well as imagery and geospatial analytics solutions.



## KNOCEAN

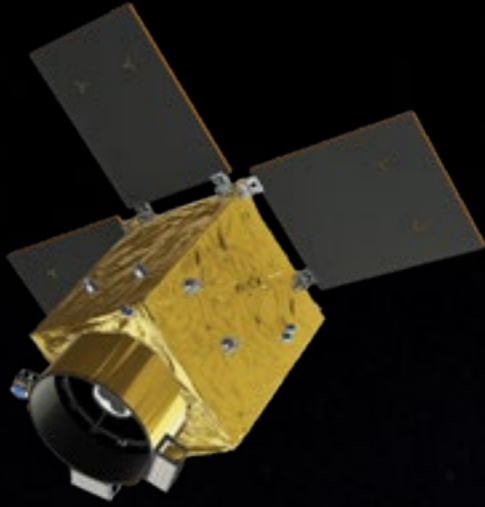
Developed to improve KNOCEAN defense and safeguard the marine environment. With near real-time situational awareness, we can identify suspicious vessels and monitor high-risk maritime zones to detect potential indicators of suspicious activities.

- AI driven platform for Maritime Domain Awareness
- Define customised maritime zones of interest for targeted surveillance
- Generate detailed reports and access in-depth maritime insights with just a few clicks



[Click here](#)





## KNIGHT Satellite

The KNIGHT satellite is planned for launch in 2027 and it offers high-end capabilities and performance for earth observation missions.

- 0.5 m very high-resolution true color imagery
- Full Motion Video (FMV) True-color: 28 frame-per-second
- Advanced SWIR imaging technology with 1.5 m resolution
- Intersatellite link to support dynamic, in-orbit tasking



[Click here](#)

## PERSEUS Satellite

PERSEUS satellite is a cutting-edge space-based remote sensing platform designed to provide high-resolution, all-weather Earth observation data.

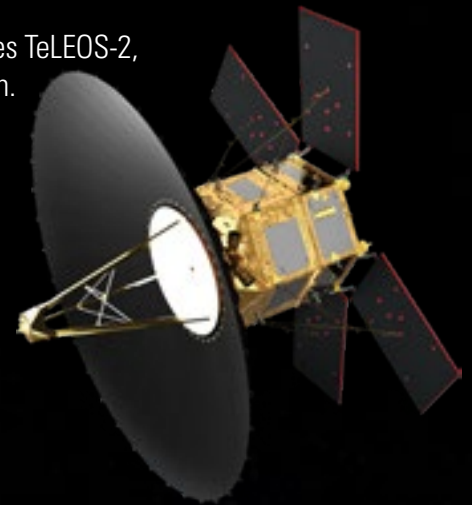
- Disaster response and management
- Environmental and climate monitoring
- Scientific and geospatial research



## Satellite-Data-As-A-Service

Our Near Equatorial Orbit (NEqO) satellite constellation consisting of satellites TeLEOS-2, DS-EO and NeuSAR captures high-resolution imagery of the equatorial region.

- The NEqO constellation offers coverage over critical regions including major shipping routes, disaster prone areas and forest fire hotspots near the equatorial belt
- Utilising high-revisit, high-resolution satellite imagery, we provide actionable insights for industries such as agriculture, maritime, sustainability, and more



## Spacecraft On-Board Computer (OBC)

A high-performance, radiation-tolerant computing system designed for reliable control and data management in Low Earth Orbit (LEO) satellite missions.

- Dual-core LEON3-FT processor for high-performance, space-grade processing
- Radiation-tolerant design ensures reliable operation in space
- Integrated FDIR system for fault detection, isolation, and recovery
- High availability architecture for mission-critical LEO satellite operations

## Power Control & Distribution Unit (PCDU)

It controls the power flow from the Solar Array and the battery and distributes that power to the whole satellite.

- Provides efficient power regulation and management to 2 kW of solar power, outputs up to 4 kW of electrical power with protection to bus, payload and all heaters
- Modular and scalable design suits all missions in LEO



[Click here](#)





# Powering Public Safety on the Move

## INTEGRATED MOBILITY, ROBOTICS, AND SUPPORT SYSTEMS FOR SAFER, SMARTER GROUND OPERATIONS

We power public safety on the move by equipping agencies with solutions that keep them agile, connected, and safe.

Our EXTREMV all-terrain carrier enables access to flood zones, debris fields, and remote terrain, while TAURUS and the RHINO provide protected mobility for frontline personnel.

Our Smart Vehicle Solutions enhance visibility and coordination, and Hybrid Electric Drive Kits extend range with quieter, energy-efficient operations. Autonomous robots handle routine tasks, freeing responders to focus on critical missions.



# EXTREMV

## ALL TERRAIN TRACKED CARRIER FOR HADR MISSIONS

EXTREMV, from the acclaimed BRONCO lineage, excels in versatility and reliability. This multi-tasker handles high rear payloads, serving as a personnel carrier, logistics transporter and specialty vehicle in extreme conditions - from the harsh arctic to forest fires, from disaster relief to rescue, and firefighting operations.

- Amphibious All-Terrain Tracked Carrier for harsh weather and terrain
- Versatile modular mission module
- Modern, digitised and intuitively designed interior ergonomics



[Click here](#)





# TAURUS

## UNMANNED GROUND VEHICLE (UGV)

More than just a vehicle, TAURUS, the Multi-Role UGV is a game-changing, multi-functional asset for public security and commercial applications. It excels in applications ranging from manned/unmanned logistics transport to surveillance and hazard response, medical support and rescue.

The modular design, open top deck and open architecture allows the TAURUS to be easily configured to meet any challenge. At its core, TAURUS is a fully electric platform with exportable power, making it a power-house in the field. While being towed to the deployment site, the platform will be regeneratively charged, ready to transform from a supporting asset to a mission-ready UGV with artificial intelligence capabilities.

- Regenerative on-the-move power hub
- Fully electric independent drive units capable of export power
- Digitalised architecture for easy insertion of autonomy or other AI modules



[Click here](#)



# RHINO

## NEXT GENERATION PROTECTED VEHICLE

The RHINO is designed to meet a wide range of missions from law enforcement to armed conflict. It incorporates a fully digitised architecture with a high-power density powertrain available in both Conventional & Hybrid Electric Drive configurations, enabling unsurpassed payload capabilities. Hybrid Electric configuration provides sufficient export power meeting future demands in ensuring sustained engagement in modern warfare.

- World's first hybrid electric 20T protected vehicle
- Fully digitised platform
- Supports wide range of missions



[Click here](#)





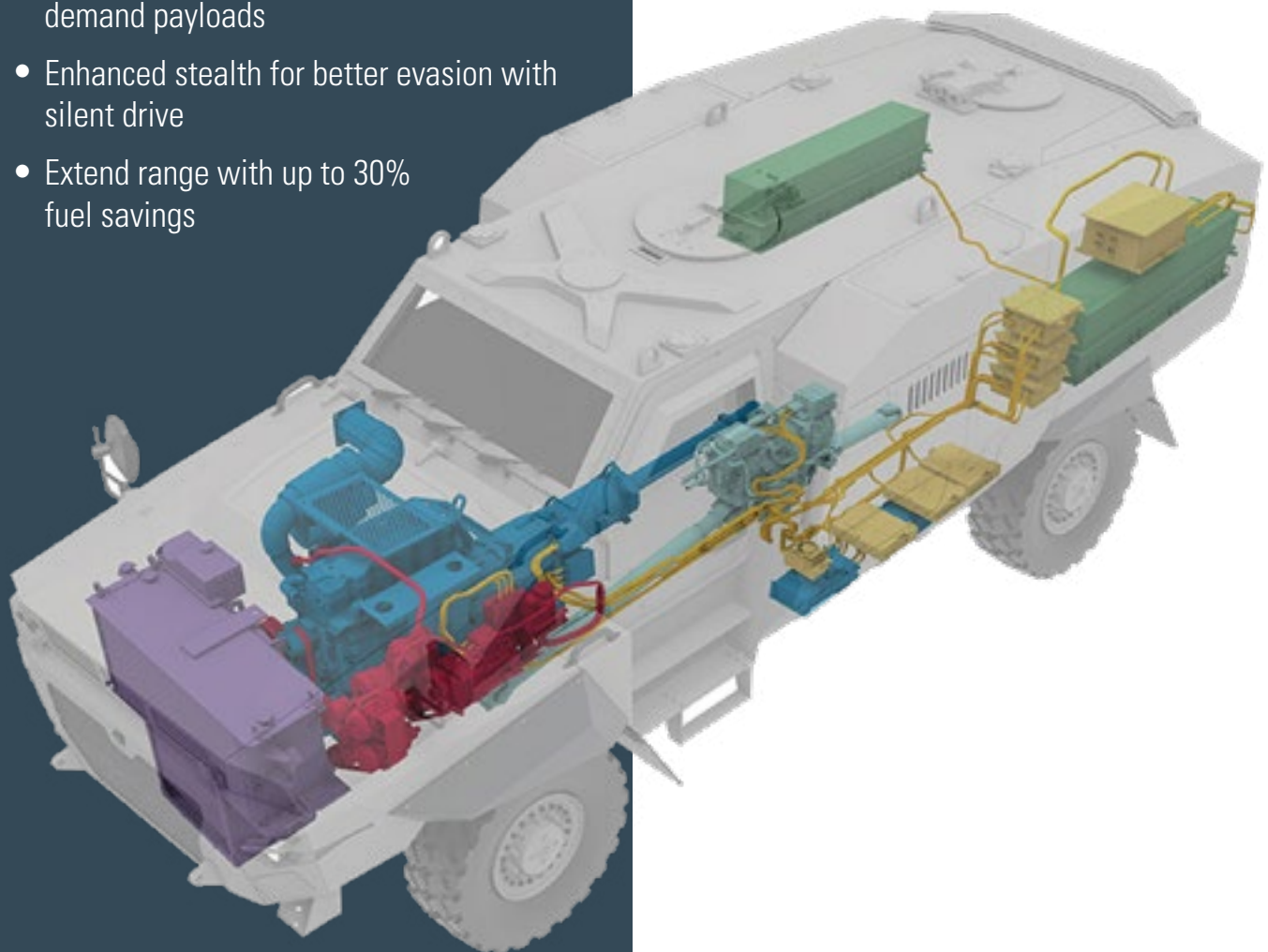
# Hybrid Electric Drive Kit (HED)

The Central Drive Hybrid Electric Drive Kit electrifies 4x4 vehicles, extending their range and enabling power export for auxiliary uses. Its high-power capabilities support extended stealth drive and silent watch operations effectively.

- Increased export power for high energy demand payloads
- Enhanced stealth for better evasion with silent drive
- Extend range with up to 30% fuel savings



[Click here](#)



# Smart Vehicle Solutions

In the current evolving AI and Data revolution world, Smart Vehicle Solutions provide the “Brain” and “Eyes” to the platform. It is positioned to rejuvenate the vehicle with innovative products that transform operational workflows, enhance driving experience, and greatly reduce crew cognitive loading.



## Smart Vision Suite

The Smart Vision Suite integrates seamlessly onto platforms, enhancing object detection, identification, and situational awareness. Using AI and Machine Learning, it provides high-clarity images in extreme low-light conditions with low latency. AI models are trained on custom datasets for optimal responsiveness and accuracy in real-time analytics.

## Smart Digitalisation Suite

The Smart Digitisation Suite, rapidly modernises platforms by consolidating digital data into a customised Graphical User Interface (GUI), resulting in a digital vehicle dashboard for enhanced driving experience. Featuring a MOSFET solid-state power controller for precise current feedback and fast tripping to protect equipment, the solution is scalable for rapid deployment or platform upgrades to meet urgent operational requirements.



# Smart Maintenance, Repair & Overhaul (MRO) Solutions

## MISSION READY 24/7

As an integrated MRO service provider, we offer comprehensive asset lifecycle support designed to enhance availability and operational readiness.

Our competencies include preventive and corrective maintenance, repair, overhaul and remanufacturing at both platforms and components (mechanical, hydraulics and electronics) levels.

We deploy cutting-edge technology with data analytics and artificial intelligence solutions, enabling complete visibility and control over critical assets to improve productivity, quality and safety.



[Click here](#)



## Workshop & Asset Digitalisation

### Leveraging Latest Technologies

We streamline processes and enhance operational efficiency through workflow digitalisation and automation solutions. We enable proactive maintenance strategies for assets by incorporating IoT-enabled health monitoring and fleet management systems.



## AI-driven Analytics

### Making Data-driven Decisions

We enable informed decision making through application of predictive maintenance and supply chain analytics, which empowers anticipation of maintenance requirements to improve asset availability. We conduct failure analysis to pinpoint root causes and implement preventive measures, thereby enhancing asset reliability, operational efficiency, and reduce total cost of ownership.

## Component MRO

### Providing Innovative Engineering Solutions

We specialise in the upkeep of mechanical, hydraulic, and electronic systems, offering a range of tailored services to ensure reliability of >1,800 components across diverse industries. Our MRO expertise extends to innovative engineering solutions such as engine remanufacturing, customised tester development and re-engineering to address obsolescence.



# Autonomous Security Robots

## PATROL AND SECURITY

Leveraging on smart technology, ST Engineering has developed a suite of autonomous robotic solutions, providing a collaborative and intuitive system that can complement any existing security and logistics operations. This enables better deployment of human resources for higher level task.



## NOVA

### Autonomous Outdoor Robot

The NOVA is an AI-powered outdoor security robot with safe, autonomous navigation, cybersecurity protection, and all-weather readiness to deliver dependable performance with minimal human intervention. Equipped with multi-role capability (interdiction, interaction, instrumentation), enabled by AI agents that dynamically adapt based on real-time user commands, the NOVA maximises utility while minimising fleet size. It is integrated with Health & Usage Monitoring System (HUMS) + AI for predictive diagnostics and preventive maintenance, ensuring higher system availability and reducing lifecycle costs.

- Autonomous navigation to deliver dependable performance
- Enabled by AI agents that adapt in real time
- Predictive diagnostics and preventive maintenance



[Click here](#)



# NEON

## Autonomous Indoor Robot

NEON is a cutting-edge indoor security robot designed for modern commercial spaces and key protection areas. It revolutionises security systems with its advanced AI, sensors, cameras and autonomous navigation. Equipped with AI-powered video analytics, NEON collects vital data, detects hazards, and performs tasks ranging from routing patrolling and real-time threat detection to crowd monitoring, emergency response management, and access control.

- AI-powered vision analytics
- Safeguard against emerging threats
- Smarter and safer



# ARES Micro Unmanned Aerial Vehicle (UAV)

ARES Micro-UAV is a squad last-mile surveillance and intelligence gathering system designed for operations within the urban terrain.



## EasyEXO

EasyExo offers crucial support and protection during demanding physical activities. Engineered to withstand the rigours of physical operations, it features flexible straps and durable materials that ensure a secure and comfortable fit.

- Provides musculoskeletal support during lifting or bending to ensure correct posture and reduce strain on the back
- Lightweight and durable
- Comfortable fit



[Click here](#)



# Ammunition

## EMPOWERING LAW ENFORCEMENT AGENCIES

The less-than-lethal ammunition is ideal for control and dispersing groups of protesters or rioters. The less than lethal ammunition offers a longer effective range and can be fired from existing grenade launchers.



## 40MM LESS-THAN- LETHAL

40 x 46mm Air-Bursting Multi Pellet LV

## SMOKE - CS TEAR GAS

White, CS Tear Gas Flameless Cs Tear Gas Multi-pellet, Bursting Cs Tear Gas



[Click here](#)



# ARIELE Protection Systems

Delivering tactical superiority and enhanced survivability, ARIELE's extensive product range is designed to strengthen public security and safeguard defence personnel while ensuring operational effectiveness.



[Click here](#)

## Protective Vest

Built for agility, ARIELE Protective Vests offer scalable protection for law enforcement and operational units. Our load-bearing system also features integrated components like belly band and yoke to optimise weight distribution.



## CleArmour

CleArmour transparent ceramics offer a lighter, thinner alternative to conventional armour glass, with superior post-impact visibility. Scalable in size, CleArmour is ideal for a range of applications including sensor shielding, vehicle windscreens, and other critical transparent protection needs.





## Body Armour Suite

ARIELE Body Armour Suite offers a versatile range of high-impact protection solutions and stab resistant solutions. Combining soft and hard armour, the suite meets is adaptable to suit varying threat levels and operational needs.



## Head Borne System

Designed for extended use, the ARIELE Head Borne System features lightweight, advanced materials to minimise fatigue without compromising protection. Ergonomic foam padding combined with a 4-point adjustable retention system evenly distributes pressure on the head, ensuring a secure and comfortable fit during extended missions.







# Rapid Response Across Maritime Frontlines

## **SMART SURFACE PLATFORMS AND ROBOTICS FOR SAFETY, RESCUE, AND ENFORCEMENT AT SEA**

Our marine solutions support fast, coordinated action at sea - from firefighting and search and rescue to enforcement and patrol.

The Heavy Firefighting Vessel provides high-capacity response for harbour and offshore emergencies, while the Coastal Patrol Boat delivers speed, agility, and modern policing capability. Unmanned Surface Vessels (USVs) enable remote firefighting and enforcement with reduced crew risk. The XPYDER hull-climbing robot performs safety checks and surveillance above the waterline.

Together, these platforms strengthen maritime safety, responsiveness, and coverage.



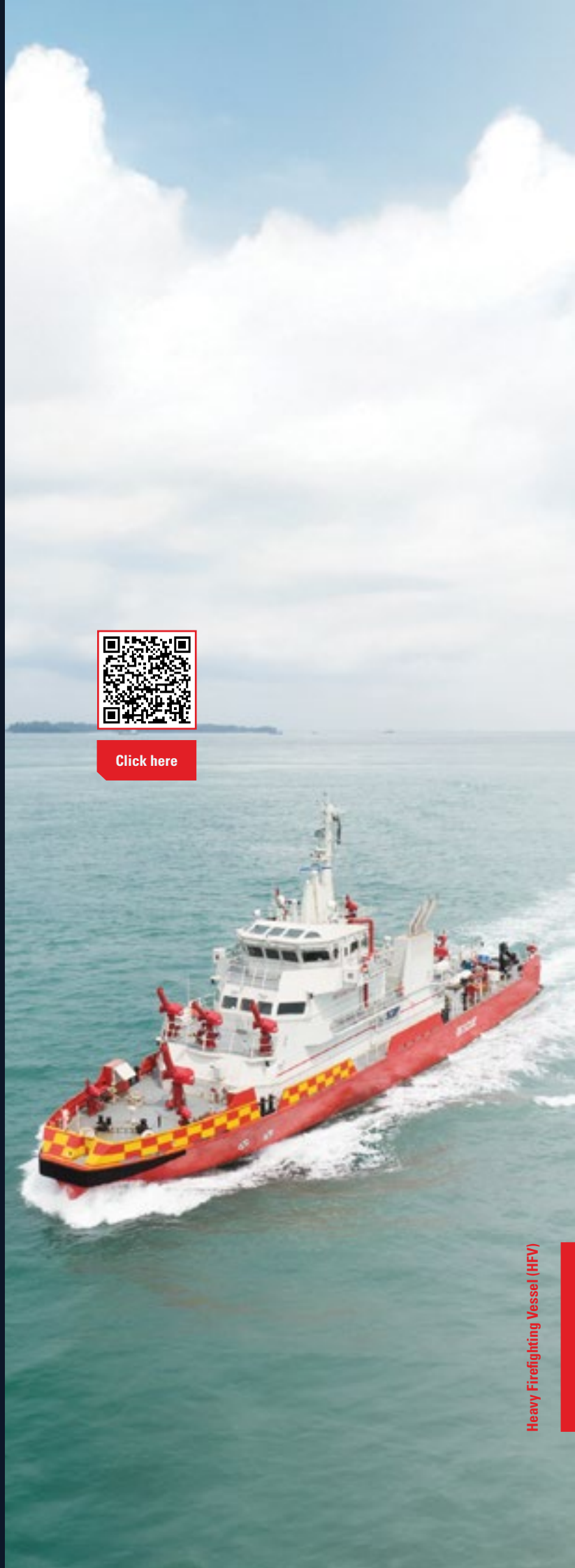
# Heavy Firefighting Vessel (HFV)

Our state-of-the-art firefighting vessel is designed to deliver unparalleled performance and reliability in maritime emergency response. Engineered with precision and built to the highest standards, this vessel is equipped to handle the most demanding firefighting operations at sea.

- 12 water and foam monitor
- Capable of speeds up to 20 knots
- Ability to supply clean air for 24 hours
- Accommodate up to 30 evacuees
- Mothership for USVs and UAVs



[Click here](#)



Heavy Firefighting Vessel (HFV)

# Coastal Patrol Boat

Coastal Patrol Boat equipped to perform multiple roles such as pursuit and arrest, coastal surveillance, harbour patrol, security, and search and rescue operations.

- High-speed performance reaching speeds over 55 knots
- Equipped with a remote-controlled fire monitor
- Designed for swift and agile movements
- Robust construction to withstand harsh marine environment



[Click here](#)





# Unmanned Surface Vessels (USVs)

We design and build Unmanned Surface Vessels (USV) equipped for a wide range of missions. Built with the latest technologies in autonomy, navigation, and remote operations, our USVs provide robust performance with mission adaptability.

## Maritime Policing USV

USV equipped with Ship Electro-Optics (EOS) for maritime policing.

- Autonomous navigation within area of operation
- Lowers operator's risks to harsh environmental conditions
- Enhanced situational awareness from real-time video and data feed



## Firefighting USV

Firefighting USV with twin fire monitors capable of discharging 2x300m<sup>3</sup> of water per hour.

- Autonomous Navigation within Area of Operation
- Fast responder to fire incident
- Keeping operator safe from danger of fire at sea



# NERVA Ship Management System

Nerva Ship Management System is a cutting-edge solution designed to provide centralised control and monitoring of platform sensors and systems.

- Offers comprehensive control and monitoring of all onboard systems from a single interface, enhancing operational efficiency
- Configurable through modular customisation, allowing for easy upgrades and integration of new systems
- Provides decision aid support with intelligent alarm tracking and guided fault diagnosis
- Incorporates data analytics and machine learning for predictive diagnostics, reducing unplanned downtime and extending equipment lifespan



[Click here](#)





# XPYDER

## HULL CLIMBING ROBOT

XPYDER is a wireless magnetic crawler adept at scaling ferritic mega structures. Its modular design allows versatile reconfiguration for multi-mission tasks. Equipped with on-board sensors and real-time surveillance, it boosts operator safety and operational efficiency.

- Versatile for any mission profile with its modular design
- Highly manoeuvrable with magnetic tracks & tetherless deployment
- Watertight design with IPX8 ingress protection



[Click here](#)





# Accelerating Digital Transformation

Prepare for tomorrow's security challenges with next-generation C5ISR solutions. Our digital transformation capabilities enhances collaboration, Manned-Unmanned Teaming (MUM-T), and situational awareness. We offer robust Command, Control, Communications, Cybersecurity, and Intelligence systems for real-time threat detection and rapid decision-making. Stay ahead of emerging threats and turn strategy into action with our cutting-edge technology.



# AI Driven Solutions

Designed to meet the dynamic challenges of modern security threats, our solution ensures robust protection and operational reliability in critical scenarios. Unified situational awareness and control can be integrated with any sensors, and robust countermeasures are implemented to neutralise drone threats, safeguarding critical installations and events effectively.

## Emergency Response System

A solution facilitates inter-agency collaboration for dispatchers, first-responders, government and healthcare agencies in order to save more lives with agile and effective emergency response.

- Rapid intelligent dispatch starting from call taking to emergency response
- Coordinated communication across public safety agencies
- Accurate, dynamic picture for optimal resource allocation
- Lower infrastructure costs and simpler application management through software-as-a-service



[Click here](#)

## Tactical Command and Control System

Digital C2 system for firefighting, designed for incident commanders, staging officers, and emergency response teams - enhancing control, safety, and operational efficiency.

- **Situational Awareness:** Real-time tracking of crews, apparatus, and equipment
- **Resource Management:** Automates personnel status, deployment, and rotation
- **Communication:** Streamlines coordination; reduces radio traffic and confusion
- **Safety & Accountability:** Alerts for missing or at-risk firefighters instantly
- **Decision-Making:** Enables rapid, informed tactical adjustments on scene



[Click here](#)

# Vessel Traffic Management Systems

Powers the command centre onshore, connecting multiple sensors port wide

- Powered by Machine Learning (ML) to analyse trends for traffic management



[Click here](#)



# AI Surveillance Tower

Surveillance tower powered by AI for border surveillance and protection of key infrastructure

- Enhances operational effectiveness as a force multiplier with AI that autonomously finds and tracks targets of interest
- Persistent day & night surveillance, reducing operator blind spots
- Capable of off-grid deployment using solar panels



# AGIL® Ops Hub

AGIL® Ops Hub represents the future of mission-critical operations, where AI seamlessly integrates into the Sense, Process, and Act framework, enhancing decision-making, collaboration, and response efficiency.

- Data-driven decision-making
- Synchronised response
- Unified collaboration



[Click here](#)







## AGIL® Counter Drone

With over a decade of running counter drone operations for large scale events and key installation protection, our AGIL® Counter-Drone system supports detection, decision-making, disruption and destruction of hostile drone threats across complex environments.

### AGIL® Counter Drone - RF Sensors

Bringing together the best of AI-enabled drone decoder technology with our patented Machine Learning (ML) algorithm, we improve the overall probability of drone detection, reducing the chances of home-made/ modified drone penetration of protected areas.

- Real-time intrusion alerts and mitigation
- Small form-factor that combines both AI and ML detection
- Rapidly deployable for quick response
- Scalable and cost-effective solution

### AGIL® Counter Drone - RF Jammer (J1000)

The Drone RF Jammer System is a field-proven electronic countermeasure designed to continuously disrupt ISM and GNSS (L1, L2) frequencies. Leveraging high-powered amplifiers and precision signal generators, it effectively neutralises single or multiple drone threats within a 1 km

radius. Integrated with real-time detection and identification systems, it ensures accurate and targeted jamming. Engineered for versatility, the system supports both fixed and mobile deployments, delivering consistent multi-band jamming within its antenna coverage.

- Integrated threat response
- Reliable 1km multi-drone neutralisation
- Deploy-anywhere versatility

### AGIL® Counter Drone - RF Jammer (J300)

The Drone RF Jammer System omni-directional RF jamming solution disrupts ISM and GNSS (L1, L2) frequencies in all directions within a 300m radius, using high-power amplifiers and signal generators for continuous, multi-band interference. This setup effectively neutralises single or multiple drones approaching within its antenna beam width, providing a robust and comprehensive countermeasure against UAV threats.

- 360° omni-directional coverage
- Multi-band, continuous interference
- Effective against multiple UAVs



[Click here](#)

# MRLN.AI

An AI-powered virtual assistant that understands voice, text and visuals to help users retrieve information, automate tasks, and make smarter decisions – seamlessly and securely.

- Streamline decision making by automating tasks and reducing cognitive load so teams focus on other priority work
- Deliver instant clarity through real-time data analysis, cutting uncertainty and speeding up response
- Surface hidden patterns and actionable insights through intelligent knowledge management – empowering users to stay one step ahead



[Click here](#)



# AGIL® Trust

An AI-driven platform that detects deepfakes, verifies content, and traces information sources to protect public trust and decision integrity.

- Detect deepfakes and manipulation across text, image, audio and video
- Verify content instantly with AI-powered fact checking
- Ensure source authenticity through transparent source traceability and tamper-proof origin verification, intent analysis and emotional disposition



[Click here](#)



# 5G Solutions

The ability to rapidly deploy reliable, high-bandwidth, low-latency 5G connectivity during emergencies enables public safety agencies to access real-time, high-fidelity data-enhancing situational awareness, coordination and response effectiveness in critical operations.

## Integrated 5G Module

5G module that can be included into the modular communications hub chassis enabling deployment of ultra high bandwidth, low latency private cellular connectivity in a small form factor.




[Click here](#)

## 5G System-on-Chip (SoC) Small Cell

Designed for mission-critical operations, this high-performance indoor 5G small cell delivers reliable, secure, and scalable connectivity in complex environments. It is compact and allows for fast, energy-efficient deployments.

Compliant with 3GPP standards, it seamlessly integrates into existing infrastructure, providing high-bandwidth, low-latency communications to support essential services in:

- Emergency response centers
- Hospitals and critical care sites
- Transport hubs and command posts
- Secure government or operations facilities
- **Fast, Flexible Indoor Implementation:** Easily deployable and scalable for various environments
- **Compact & Energy-Efficient Architecture:** Optimised for space-saving, sustainable operation
- **Secure, High-Bandwidth Performance:** Ensures seamless, mission-critical communications

## All-in-one MEC

Multi-Access Edge Computing (MEC) enables faster, more reliable, and real-time decision-making at the network edge. MEC reduces latency, enhances performance, and improves user experience by processing data nearer to where it's generated (e.g., on devices, IoT, sensors) instead of sending it all the way to a distant data center. MEC ensures critical real-time applications such as surveillance, communication, and disaster response, can be executed with low latency, high reliability, and efficiency.

- **Faster Deployment & Data Residency:** No need to wait for data centers. Process and store data locally, so you get quicker deployment and meet data residency rules
- **Modular & Scalable Architecture:** Add more capacity when you need it. The modular setup makes it easy to scale during big events or emergencies
- **Optimised Costs & Network Load:** By handling data at the edge, you reduce the need for expensive cloud transfers and cut down on overall network traffic



# Mobile Command Platforms

In times of major crisis or natural disasters, rapid deployment of command centres to mobilise resources and coordinate multi-agencies rescue efforts are critical to saving lives and property. Our range of customisable vehicles addresses the most demanding homeland security and emergency situations where clear and effective command, control and communications are essential.

- Mobile-Ready Mobility
- Interoperable Communications
- Real-Time Insights & Endurance

## Forward Command Vehicle (FCV)

Forward Command Vehicle (FCV) is tailored for command on the move. This allows commanders to issue command and take control of the situation while enroute to emergency site.

- Supports interoperability between agencies
- Highly manoeuvrable
- Suitable for different terrains
- Supports voice, data and video communications



[Click here](#)



## Mobile Command Post

Mobile Command Post (MCP) is tailored for cross-country and challenging terrains, featuring a fast deployable shelter and expandable working space (45 sqm).

For on-site mission planning and emergency management.

- Provides 45sqm of working space
- Supports interoperability between agencies
- Suitable for different terrains
- Supports voice, data and video communications



[Click here](#)



# AGIL<sup>®</sup> Connect

## UNIFIED COMMUNICATION SUITES, SATCOM TERMINAL

AGIL<sup>®</sup> Connect, built on our unified communications suite, ensures seamless interoperability across cellular, satcom, and radio networks, powering solutions like the 5gib and manpack satcom terminals for edge connectivity.

- Lightweight
- Highly Reliable
- Interoperable with other vendor's equipment



[Click here](#)

## Unified Communications Suite (UCS)

Designed to integrate diverse communication systems - radio, satellite, and cellular — into a single, secure platform. It ensures seamless interoperability across different frequencies, networks, and devices, enabling effective, real-time information sharing in complex operational scenarios.

### Applications Include:

- Mobile radios for frontline responders
- IP and analogue telephony in command and control centres
- Secure client software for use on laptops and smartphones in the field
- Scales from single users to full mission operations
- Enables seamless cross-agency communication
- Maximises existing communication assets



[Click here](#)





[Click here](#)

## Parabolic Manpack - A1000

The Parabolic Manpack A1000 is a rugged, triband SATCOM terminal built for rapid, secure connectivity and automated pointing in hostile or infrastructure-denied environments. Compact, lightweight, and fully integrated, it can be deployed in under 10 minutes — ideal for frontline teams needing reliable broadband in the field.

- Rapid deployment
- Rugged and lightweight
- Fully integrated system

## Flat Panel Manpack - M300

The Flat Panel Manpack SATCOM M300 is a lightweight, Ku-band terminal built for high-performance connectivity in harsh and tactical environments. Rugged and compact, it enables quick deployment for secure communications in the field.

- Ultra-portable design
- Tactical-ready
- Fast setup



# Training & Simulation Systems

We help our customers to learn and train better so they can achieve mission success and enhance learning outcomes.

Our advanced learning, training, and simulation solutions serve a wide range of sectors, including aerospace, land, maritime, homeland security, and education.

We provide simulation and training systems for Live, Virtual and Constructive, Individual to Team, Common Simulation Environment, Multi-Domain Operations and Digital Twins.



# Incident Response Interactive Simulation (IRIS)

IRIS harnesses simulation training for public safety and security officers. Catering to diverse users ranging from frontline officers to commanders, our simulation solutions train officers to respond appropriately and effectively in an evolving incident or situation.

- Immersive simulation system with realistic scenarios
- AI assessment reports with training analytics



[Click here](#)





# AGIL® Digital Sandtable

A touch-based interactive device with an accessible tabletop user interface, that provides full visualisation of terrain using 2D map navigation and a correlated fly-around 3D view display. It supports scenario planning, urban planning and training of emergency response exercises.

- Next generation scenario planning and monitoring
- Tabletop user interface
- Immersive visualisation and emergency handling



[Click here](#)



[Click here](#)

## Driver Training Simulation System (DTSS)

A driving simulator solution designed for a wide-range of vehicle types using a proprietary DriveSim simulation engine. DTSS caters for commercial Class 2, 3 and 4 vehicles driving training such as motorcycle riding, airside vehicle driving, bus driving and port prime movers. DTSS offers a full range of solutions from Mixed Reality, Compact to Full-Scale Motion Driving Simulator depending on needs and budget of the customers.

- Scenario Editor that allows highly customised scenarios for training
- AI assessment report with training analytics





# Air Traffic Control Simulator

A fully scalable, high-fidelity training solution that offers highly realistic radar, procedural and aerodrome simulation.

- Mimics real-world scenarios to train for rapid decision-making in critical situation
- Cost-effective and flexible to switch between simulator modes in a single system



[Click here](#)

# Virtual Firefighting Trainer

Virtual Firefighting Trainer is an immersive firefighter training system that blends high-fidelity virtual fire scenarios with industry-standard equipment to deliver feels-real training experiences. The system equips firefighters with the essential skills to enhance the quality of live fire training and improve situational awareness during real-life firefighting.

- Deliver Feels-Real training experiences through the use of industry-standard equipment in high fidelity virtual fire scenario
- Connected Training System to achieve operational readiness with end-to-end training including learning analytics and performance platform



[Click here](#)





## Unmanned Surface Vessel (USV) Simulator

Designed and built to meet the initial and recurrent training needs of USV operators, the USV simulator offers both platform training as well as mission specific training.

- Customisable visual scenarios with extreme visual realism
- Comprehensive Instructor Operating System (IOS) with After Action Review (AAR)



[Click here](#)

## Virtual Boat Simulator

The Virtual Boat Simulator offers users immersive real-world scenarios with high-fidelity, realistic VR environment. It enables users to conduct high-speed operations in inclement weather while honing their navigational skills in challenging operation conditions.

- The Virtual Boat Simulator is adaptable to different craft, and can be deployed quickly so crew can perform various high-speed tactical manoeuvres and intercepts to improve their boat handling skills
- Immersive Experience
- High-fidelity visuals
- Customisable Ship Models



[Click here](#)

## Operational Driving Simulator (ODS)

This driving simulator combines a compact design with a lightweight build. Portability is enhanced when paired with a Head-Mounted Display (HMD), making it ideal for Just-In-Time (JIT) training at onsite locations. With 4-Degrees of Freedom (4-DoF) motion, its precise tactile feedback accurately recreates a realistic driving experience.

- Superior portability with compact design and lightweight build
- Compatible with various immersive visual displays (e.g. XR HMDs)
- Customisable driving dashboard for different vehicle layouts and training needs





# Drone Training

Kinetics Drone Training Centre (KDTC) delivers structured and comprehensive drone training and flight support services designed for professionals, industry operators, and organisations. Our programmes are developed in accordance with Civil Aviation Authority of Singapore (CAAS) regulations and established industry standards, ensuring safe, compliant, and proficient Unmanned Aerial Vehicle (UAV) operations.

- Drone Training & Certification - From basic to advanced UAV operations, including UABT certification, mission planning, and precision flying
- Flight Support & Consultancy - Expert pilots, regulatory compliance assistance, and customised UAV solutions for security, inspections, and test flights
- Specialised Industry Training - Certified UAV operations in public safety, infrastructure inspection and emergency response

## Specialised Driving & Technical Training

Our comprehensive training services include specialised driving training and technical training for technicians. Emphasising safety and precision, our rigorous programmes ensure readiness of drivers for deployment and fleet reliability.

- Technology integration for simulated training experience
- ISO-certified (ISO 9001, ISO 14001, ISO 22301, ISO 28000, ISO 45001)



[Click here](#)

## Extended Reality (XR) Solutions

Our Extended Reality solutions offer immersive and interactive training experiences. Users can practise complex maintenance procedures, hone collaborative skills for multi-person tasks, and explore new environments – all within the confines of low-risk virtual environments.

### Key Applications:

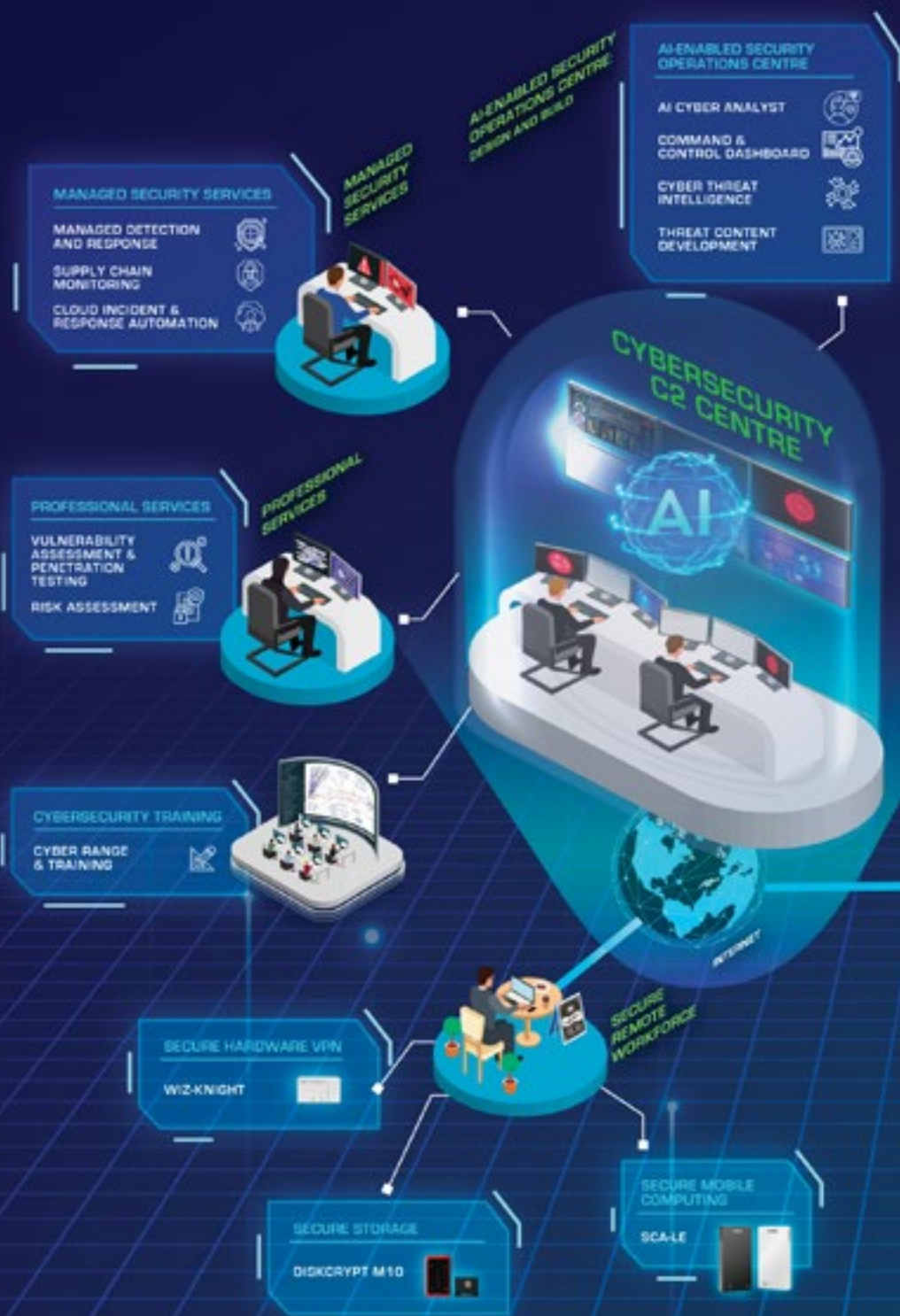
1. Enhanced training and design visualisation
2. Simulation training
3. Guided workflow / remote assist for training operations

- Bespoke solutions for wide range of use case
- Ability to conduct multi-location remote collaborative training
- A member of the limited group of partners for Microsoft Industry Solutions Unit



[Click here](#)







Cybersecurity Magazine



Get social with us!

AI-ENABLED OPERATIONAL TECHNOLOGY CYBERSECURITY

ADAPTIVE & INTELLIGENT CYBER MONITORING FOR OT SYSTEMS (AICVMO)

AI-ENABLED OPERATIONAL TECHNOLOGY CYBERSECURITY



CYBER INFRASTRUCTURE & SERVICES

CLOUD & NETWORK INFRA

QUANTUM READY NETWORK ENCRYPTORS  
ETHERCRYPT & NETCRYPT SERIES

CROSS DOMAIN SOLUTION

CYBERTRANSPORTER

A COMPREHENSIVE SUITE OF AI-ENABLED IT, OT, AND CLOUD CYBERSECURITY SOLUTIONS TO EMPOWER CYBER RESILIENCE

# Cyber Capability

A trusted cybersecurity leader in safeguarding government, critical infrastructure, and enterprises with unparalleled cyber resilience. Our comprehensive suite of cybersecurity solutions is backed by deep domain expertise and a proven track record, offering end-to-end capabilities.



# Secure Gateway

Our secure gateway solutions provide high-performance and robust, secure data transfer between networks or domains operating at different security levels.



[Click here](#)



## CyberTransporter

CyberTransporter provides high-assurance, hardware-enforced one-way data transfer, ensuring absolute security for defence networks. With patented SFP+ technology and file loss detection, it ensures zero data leakage while maintaining seamless, high-speed transmission.

- File loss detection capability
- High throughput
- Stackable hardware for integration of 3rd party solution



## NetCrypt Series

Harness a range of high-performance IP encryptors as your security gateway for office corporate LANs, site-to-site VPNs, mobile vehicles, rugged deployment, or wireless inter-office connectivity. With NetCrypt Series, you can connect to multiple sites securely — backed by AES algorithm and built-in firewall.

- Secure and reliable communication
- Robust data protection
- Enhanced security posture

# Secure Remote Access

Remote work offers flexibility, it also introduces vulnerabilities, allowing users to access corporate networks without adequate protection. Without a comprehensive solution, organisations struggle to effectively address these risks.

Our remote workforce suite provides thorough security for laptop device, ensuring strong data protection and preventing unauthorised access, regardless of an employee's location.



## WiZ-Knight

A portable Wi-Fi encryptor device with multi-factor authentication (MFA), available for on-premises or cloud deployment. Designed to secure remote communications by isolating endpoints and encrypting data traffic over untrusted networks.

- Portable encryptor, leading to small carbon footprints
- Centralised management & control
- Multi-authentication support



[Click here](#)





## SCA-LE

Organisations are increasingly embracing flexible working arrangements, allowing employees to work from home or anywhere. However, this flexibility also increases the exposure of employees' devices to ransomware, malware, and theft, potentially leading to business disruptions and the loss of sensitive information.

SCA-LE is purpose-built to enable secure remote work. As a portable zero-client device with no user-accessible storage, it leverages Zero Trust security principles alongside virtual desktop application technologies. This design effectively blocks ransomware and prevents data loss caused by malware or theft.

With its compact form factor, centralised updates, and cost-effectiveness, SCA-LE is the ideal solution for organisations seeking to provide secure and flexible working environments — without compromising security or productivity.

- Portable in size and weight
- Ease of use requiring very few steps to set up a secure connection
- Move to first point



[Click here](#)

Secure Remote Access

[Click here](#)

# AI-Enabled Cyber Command and Control Centre

We have designed, architected, implemented, and operated over 23 Cyber Command and Control Centres (Cyber C2 Centres) across IT, Operational Technology (OT), and cloud environments for governments, Critical Information Infrastructures (CIIs), and enterprises.

As the cyber threat landscape evolves, traditional Cyber C2 Centres face increasing challenges in detecting and responding to sophisticated threats in real time. To address this, we have built a specialised team dedicated to developing AI-enabled Cyber C2 Centres.

By leveraging AI-powered threat intelligence, advanced threat content, centralised Command and Control dashboards, and AI Cyber Analyst, we are proactively enhancing our ability to combat emerging threats — delivering faster, smarter, and more effective cyber response capabilities.



## Threat Content Development

Our Cyber C2 Centre is designed, built, and delivered with our comprehensive threat content library contextualised to our specific customers ensuring effective detection of threats across all phases of security operations.

- Threat-centric approach that ensures the detection use cases are continuously updated and maintained
- Expertise in developing and delivering threat content tailored to customer needs





## AI Cyber Analyst

Our AI Cyber Analyst enhances Tier 1 analysts with Tier 3-level insights and recommendations for advanced tasks like threat hunting and investigation. It adapts through feedback, optimises operational metrics, and produces actionable reports, while improving detection systems with Sigma rules for threat detection.

- Automates mundane, labour-intensive tasks
- Enables analysts to focus on valuable analytical activities



[Click here](#)



## Command and Control (C2) Dashboard

Our C2 Dashboard strengthens security operations with advanced visualisation that highlights critical data, improving situational awareness and decision-making. By presenting key insights prominently, it enables stakeholders to make informed decisions effectively.

- Design thinking approach
- Command and control science
- Cognitive visualisation dashboard



[Click here](#)



## Cyber Threat Intelligence

Our AI-enabled cyber threat intelligence fully automates intel translation with natural language processing, delivering valuable insights and actionable intelligence for a proactive defence.

- Fully automated with AI capability
- Translates to natural language model
- Contextualised intelligence



[Click here](#)



# Managed Security Services

Unlike traditional Managed Security Service Providers (MSSPs), our intelligence-driven detection and monitoring deliver tailored strategies that enhance resilience and strengthen your security posture.

Our cybersecurity professional services deliver end-to-end solutions that combine strategic planning, proactive security measures, and continuous cyber training. We ensure a comprehensive approach to safeguarding your organisation while building long-term resilience.



[Click here](#)

## Managed Detection & Response (MDR)

Our MDR service features continuous proactive threat hunting, behavioural analysis, and a robust digital forensics and incident response. By leveraging advanced threat intelligence, we swiftly detect and address incidents, ensuring comprehensive protection.

- Threat hunting
- Real-time detection and response
- Scalable and modular solutions



## Cloud Investigation and Response Automation

Our cloud security monitoring offers proactive threat hunting with automated investigation and response. Its advanced deception capability deceives and uncovers nesting threats, enhancing the threat hunting process and reducing false positives.

- Continuous monitoring and real-time threat detection for cloud environments
- Enhanced visibility into cloud activity and potential risks
- Rapid response capabilities to mitigate cloud-based threats



## Vulnerability Assessment & Penetration Testing (VAPT)

Our VAPT is a comprehensive security testing approach aimed at identifying and addressing cybersecurity vulnerabilities in networks, wireless systems, web applications, and mobile applications. This process provides a thorough analysis to enhance your overall cybersecurity posture. We also offer a range of end-to-end services, including threat intelligence, incident response, and security consulting.



[Click here](#)

- Proven track record
- Comprehensive end-to-end service offering



## Cybersecurity Exercise and Training

Our Cybersecurity Exercise and Training Academy delivers advanced programmes, including OT cybersecurity and specialised cyber exercises, designed for role-specific training to sharpen skills and strengthen organisations' cybersecurity posture.

We also conduct highly realistic cyber exercises for C-Suite leaders, IT teams, and cybersecurity professionals — equipping them to respond effectively to real-world threats and crises.

- Tailored learning and role-specific training
- Hands-on exercises and simulated environments



[Click here](#)



## CONTACT US

[www.stengg.com/en/public-security](http://www.stengg.com/en/public-security)  
[dpsib@stengg.com](mailto:dpsib@stengg.com)

